

DESCRIPTION

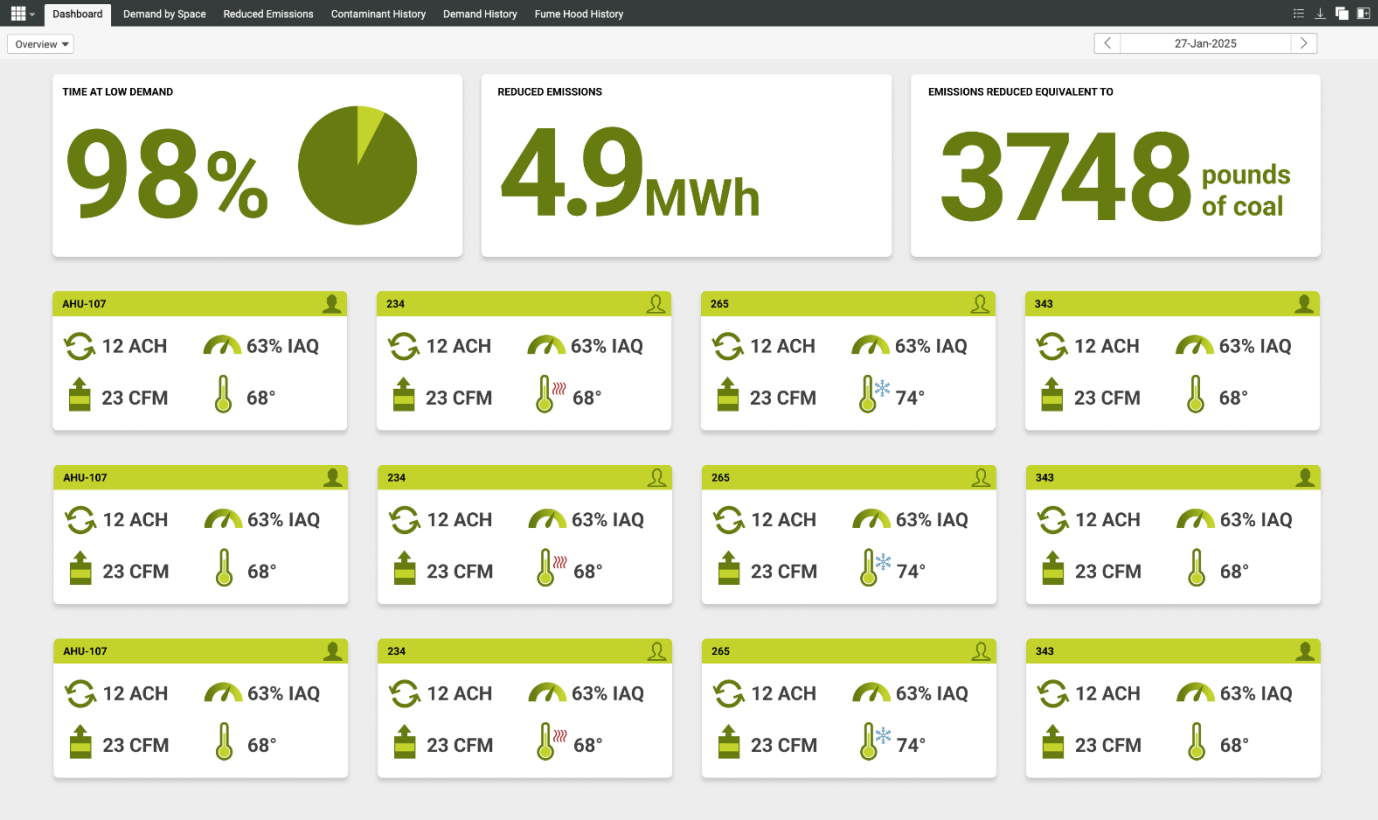
AntrumEYE® is a software platform designed for facilities leaders to monitor and analyze building ventilation systems quickly and efficiently, identifying energy-saving opportunities along the way. The platform streamlines the collection, visualization, and interpretation of ventilation data, which traditionally is slow, manual, and costly. By providing actionable insights, end-users can optimize ventilation performance and reduce energy consumption.

While adaptable for various applications, AntrumEYE was developed specifically with laboratory end-users in mind. The platform provides insights into ventilation demand using data shared over the BMS and from the AntrumX® centralized sensing system (when applicable). Additionally, it displays key safety and energy-saving metrics, including air change rate, kWh savings, supply and exhaust valve CFM, sash position, air quality trends, and more.

AntrumEYE can be used for data trending and collection to:

- 1. offset consulting fees
- 2. prioritize projects using data
- 3. develop site-specific ROI

Sample Dashboard:



The dashboard highlights key safety metrics, energy savings, and areas with the highest ventilation demand. Each card can be clicked to view more detailed data and analyze trends.

- The “Time at Low Demand” indicates the percentage of the selected date range where the observed air change rate is below the design ACH.
- The “Reduced Emissions” card highlights the calculated energy saved due to being at lower demand. We’re able to estimate this as a function of actual ACH, AHU efficiencies, and space attributes, such as volume and temperature.
- Each monitored space has a dedicated card showing the current state of that particular space with respect to the following:
 - **Occupancy:** the human icon in the title bar is filled when the space is occupied
 - **Fume Hood Demand:** cumulative fume hood exhaust
 - **Thermal Load:** temperature setpoint
 - **Air Quality:** highest contamination level across all contaminants relative to threshold limits

HARDWARE

AntrumEYE is a standalone solution that plugs directly into any standard outlet. It integrates with your building over BACnet MSTP/IP and supports an internet connection, which enables automatic software updates and ensures you always have the latest features and improvements.



Power Consumption	1A@24V
Operating Temp.	0C – 50C
BACnet MS/TP	Data rates: 9600, 19200, 38400, 57600, 76800, 115200 Transceiver: Non-isolated, 1/8 unit loading Switch: <ul style="list-style-type: none">• Terminate: 120Ω termination resistor with 510Ω bias resistors• Continue: 47kΩ bias resistors
BACnet IP	10/100/1000 Ethernet

INTEGRATION

Integrating data points such as air change rate, supply CFM, exhaust CFM, sash sensors, occupancy status, temperature setpoints, etc. is as simple as completing a space questionnaire to auto-generate a BACnet form, which is then imported into AntrumEYE.

USER MANUAL

Instructions for [connecting](#) to AntrumEYE, configuring [BACnet](#), using the [dashboard](#), and more can all be found on [antrum.com](#).